



European Society
of **Endocrinology**
The voice for endocrinology

Membership Information and application form

By joining ESE, from as little as **€10 as a National Affiliate Member**, we can work together to develop and share the best knowledge in endocrine science and medicine. Special membership rates for nurses, early career endocrinologists, and those not from high income countries are also available.

Contact

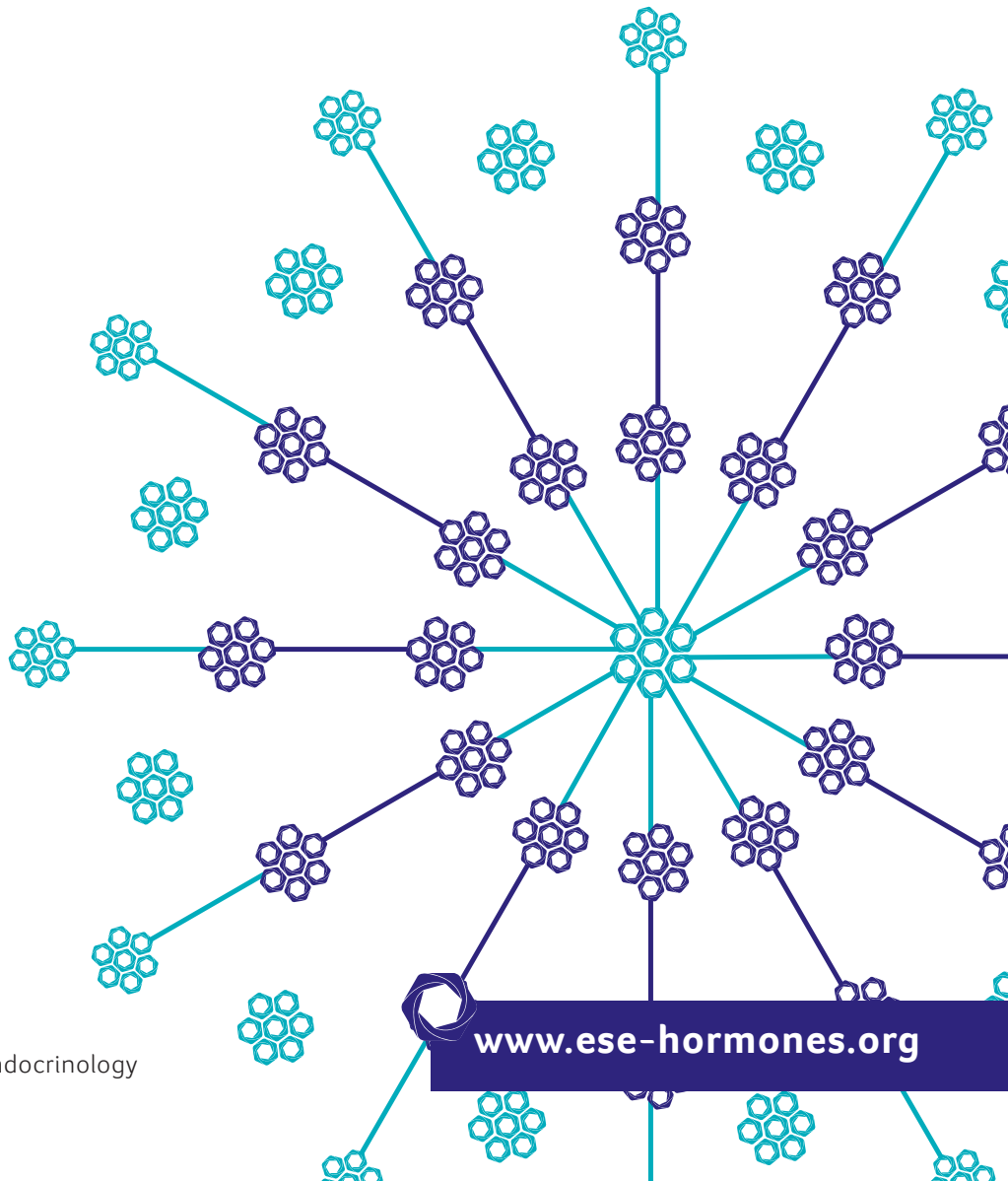
T: +44 (0)1454 642247

E: info@euro-endo.org.

 twitter.com/ESEndocrinology

 facebook.com/EuropeanSocietyofEndocrinology

www.es-e-hormones.org



Membership categories and benefits

Ordinary Members

Eligibility and benefits

Membership is open to researchers, clinicians and students in the field of endocrinology and hormonal systems. Joining ESE gives you the opportunity to:

- Access all five official journals of ESE for free, gain reduced rate print subscription to EJE, JOE, JME and ERC. New free Open Access publishing in Endocrine Connections is available for existing members
- Join an ESE committee or a special interest group
- Receive regular information on endocrinology from around the globe through the tri-annual newsletter, monthly news alerts and daily news updates
- Access ECE content online if you are unable to attend, or to catch up on what you have missed
- Provide input into pan-European policy discussions
- Have voting rights with regards to appointing the ESE Executive Committee
- Contribute to the development of clinical guidelines in your area
- Benefit from reduced registration rates to ECE and other ESE events
- Gain access to exclusive Prizes, Grants and Awards

Application process and supporting materials

Applications for Ordinary membership and subscription to the journals can be made in two ways:

- By completing the online application and payment form available on the ESE website at www.e-se-hormones.org/membership/. Payment by credit card is only accepted through the ESE website by completing the online application and payment form.
- By completing this application form and sending it to the ESE Office and paying by bank transfer or with a cheque in Euros made payable to European Society of Endocrinology. The ESE bank details are shown on page 4 of the application form.

Applications for Ordinary membership must be accompanied by payment of the first year's membership fee. The application should be returned to the ESE Secretary, European Society of Endocrinology, Euro House, 22 Apex Court, Woodlands, Bradley Stoke, Bristol, BS32 4JT, UK or emailed to info@euro-endo.org, entitled 'Application for ESE Ordinary membership' or faxed to +44 1454 642222.

Approval procedure

In accordance with the ESE Constitution, every membership application will be approved by the ESE Executive Committee at their regular Executive Committee meetings. Please note applications will not be processed unless payment is received and the application is completed in full.

Membership fees

A reduced rate is available for members from countries below high income country status, as classified by the World Bank. Income status can be checked at http://data.worldbank.org/about/country-classifications/country-and-lending-groups#High_income

Endocrinologists who are from countries classified as high income, but who are nurses, or under 35 years of age or retired from employment will also be eligible for the reduced rate.

Membership Category	Full Rate	National Affiliate Membership
ONE YEAR		
Full members	€80	€55
Reduced Rate	€35	€20
In-training	€20	€10
THREE YEAR		
Ordinary	€215	–
Reduced Rate	€95	–
LIFETIME		
Ordinary	€1280	–
Reduced rate	€560	–

National Affiliate Membership

Members of ESE's National Affiliated Societies are eligible for a discount on their ESE membership fees. This discount has been provided as part of the ESE Council of Affiliated Societies ongoing efforts to bring greater collaboration between ESE and the national endocrine societies of Europe.

In order to benefit from this discount you must provide details of your national society membership during the membership application process.

Find out more about National Affiliate Membership here: www.e-se-hormones.org

Affiliated Society Members

Affiliated Society membership is open to national endocrine societies in Europe and in countries bordering the Mediterranean Sea as well as pan-European and international sub-specialist endocrine societies. Affiliated Societies have one vote per society and can attend general meetings.

Benefits will include the ability to nominate ECE locations, voting rights, information on developments in Europe and access to representation in Brussels.

If your society would like to apply to become an Affiliated Society of ESE please complete the application form available on the website at www.e-se-hormones.org/membership/.

Associate Society Members

Associate Society membership is open to national endocrine societies outside of Europe and countries bordering the Mediterranean Sea. Associate Society Members can attend general meetings. Other benefits include copies of the newsletter ESE News (3 times a year), which is sent to the nominated representatives, and subscription to the ESE Monthly and Daily email alerts. If your society would like to apply to become an Associate Society Member of ESE please complete the application form available on the website at www.e-se-hormones.org/membership/.

Corporate Members

Corporate membership is open to companies working in the field of endocrinology. There are no voting rights associated with this category of membership but they can attend general meetings. The benefits include priority booking and discounts when exhibiting at or sponsoring ESE congresses or other events, and access to Europe's opinion leaders. They also gain regular open dialogue with the ESE Executive Committee and a team of dedicated HCP therapy area specific experts. Through such mutual collaborative activity, ESE offers our Corporate Members unique opportunities to work together with the Society to improve the medical education of HCPs. If you would like to discuss becoming a Corporate Member of ESE please contact the ESE office at info@euro-endo.org, or complete the application form available on the website at www.e-se-hormones.org/membership/.

Print subscription rates for ESE official journals

The print subscription rates, available to all members of ESE, for the ESE official journals are as follows:

<i>European Journal of Endocrinology</i> (http://www.eje-online.org/)	€220 print
<i>Journal of Endocrinology</i> (http://joe.endocrinology-journals.org/)	€265 print
<i>Journal of Molecular Endocrinology</i> (http://jme.endocrinology-journals.org/)	€244 print
<i>Endocrine-Related Cancer</i> (http://erc.endocrinology-journals.org/)	€265 print

Please note: Ordinary Members receive free online access to all four of these journals and *Endocrine Connections*, an interdisciplinary Open Access journal.

Prices given are for 2017 subscriptions.

Application Form for ESE Ordinary Membership

Personal Details

TITLE (eg. Professor / Dr etc):*

FIRST NAME:*

LAST NAME:*

ADDRESS:*

TELEPHONE:*

FAX:

EMAIL:*

DATE OF BIRTH:*

PROFESSIONAL DEGREE (eg MD, PhD):

*REQUIRED

Essential Supporting Information

(Applications received without the information below or in the box opposite will not be processed)

Applications for Ordinary Membership must be from members of a national medical/scientific society in endocrinology or a related subject.

If you are NOT a member of a relevant organisation then please send a letter of recommendation from either your tutor, superior, head of department or another ESE member (stating their membership number). The letter should state that you have an active interest in endocrinology and an example template letter is available on the ESE website if required.

Please tick one of the options below.

- I am not a member of a relevant organisation and wish to submit a letter of recommendation. Your letter should be from either your tutor, superior, head of department or another ESE member (stating their membership number). The letter should state that you have an active interest in endocrinology and an example template letter is available on the ESE website, if required.
- I am a member of a national medical/scientific society in endocrinology or a related subject. Please write the name of this society:
- I am a member of one of ESE's National Affiliated Societies. Please write the name of this society:

Members of ESE's National Affiliated Societies are eligible for a discount on their ESE membership fee. This is subject to random checks by ESE. By providing this information you are confirming that ESE is able to check this information with your national society.

Which one of the following best describes your primary professional role?

(please tick only one)

- None
Administrator
Basic researcher
Clinical practitioner
Clinical researcher
Fellow (Clinical)
Fellow (Postdoctoral/Research)
Industry professional
Nurse
Retired
Student
Other:

Which of the following describe your area(s) of interest?

(You can tick more than one)

- Adrenals
Behaviour
Bone/calcium
Cancer
Cardiovascular/hypertension
Comparative endocrinology
Cytokines and growth factors
Diabetes/metabolism/nutrition
Endocrine tumours and neoplasia
Endocrine disruptors
Endocrine surgery
Gene regulation
Genetics
Growth and development
Menopause
Neuroendocrinology
Pituitary
Reproduction (male and female)
Steroid receptors
Signal transduction
Thyroid

Please select an ESE Focus area that you are interested in

(you can tick more than one)

- Adrenal/Neuroendocrine Tumours
Calcium/Bone
Diabetes/Obesity/Metabolism
Environment/Society/Governance
Interdisciplinary Endocrinology
Pituitary/Neuroendocrinology
Reproductive Endocrinology
Thyroid

Application Form for ESE Ordinary Membership

My area of interest is primarily

(please tick only one)

- None
- Basic
- Both Basic and Clinical
- Clinical
- Other:

How did you hear about us?

(you may select more than one)

- Email from ESE
- ESE News magazine
- ESE stand at a conference/training session
- Flyer/brochure/poster from ESE
- Online advertisement
- Print advertisement in a journal or magazine
- Recommendation from a colleague
- Recommendation through an affiliated society
- Search engine
- Social media
- Other:

Please let us know what attracted you to membership?

(you may select more than one)

- Access to journals
- Career support
- Conferences/training sessions
- Enhancing my CV
- Grants/funding
- Networking
- News updates from the sector
- Reputation of the Society
- Support given to students
- Other:

Terms

You can read the full terms and conditions of membership by visiting: www.e-se-hormones.org/about-us/membership/terms-and-conditions

Mailing preferences

Make the most of your membership

Don't miss out on opportunities to get involved — make sure you are receiving email updates about the latest Society activities and news from the endocrine community.

Tick the types of emails you want to receive from us below.

- General updates on ESE activities
- Updates on ESE events
- Industry news from ESE's sponsors
- Endocrinology news
- I do not want to receive any email communications from ESE

Postal mailings

As one of your membership benefits, you qualify for a free print subscription to the Society's newsletter, ESE News, and postal updates from the Society.

Please let us know whether you would like to receive these updates

- I would like to receive postal mailings from ESE
- I would not like to receive postal mailings from ESE

Membership directory

Maximise your networking opportunities

Make it easy for fellow members to network with you by including your details in the Society's membership directory.

- I would like to be included in the members directory
- I would not like to be included in the members directory

Media enquiries

Help to ensure that endocrine news stories are accurately reported

From time to time, the Society assists journalists by enlisting our members to provide expert comment on endocrinology news stories.

- I would like to be contacted about media enquiries
- I would not like to be contacted about media enquiries

Payment Information for ESE Ordinary Membership

ESE Membership fees *(Please tick)*

Membership Category Full Rate National Affiliate Membership

ONE YEAR		
Full members	€80 <input type="checkbox"/>	€55 <input type="checkbox"/>
Reduced Rate	€35 <input type="checkbox"/>	€20 <input type="checkbox"/>
In-training	€20 <input type="checkbox"/>	€10 <input type="checkbox"/>
THREE YEAR		
Ordinary	€215 <input type="checkbox"/>	–
Reduced Rate	€95 <input type="checkbox"/>	–
LIFETIME		
Ordinary	€1280 <input type="checkbox"/>	–
Reduced rate	€560 <input type="checkbox"/>	–

Endocrinologists who are from countries classified as high income, but who are nurses, or under 35 years of age or retired from employment will also be eligible for the reduced rate.

A reduced rate is available for members from countries below high income country status, as classified by the World Bank. Income status can be checked at http://data.worldbank.org/about/country-classifications/country-and-lending-groups#High_income

If applying for a reduced rate or in-training membership, please tick one of the following:

- I am a nurse
- I am a clinician-in-training*
Expected date of completion of training:
- I am a scientist-in-training*
Expected date of completion of PhD:
- I am under 35 years of age
Date of birth:
- I am resident in a country classified as below high income country status
- I am retired

* Please note: You must submit a letter providing proof of your student status. An example of a template letter is available to complete on the ESE website, if required.

ESE Journal print subscription fees available to ESE Members

All memberships include free online access to all four of the journals below and *Endocrine Connections*, an interdisciplinary Open Access journal.

If you would like to subscribe to a journal in a print format then please tick which journal(s) below:

- European Journal of Endocrinology* €220 print
<http://www.eje-online.org/>
- Journal of Endocrinology* €265 print
<http://joe.endocrinology-journals.org/>
- Journal of Molecular Endocrinology* €244 print
<http://jme.endocrinology-journals.org/>
- Endocrine-Related Cancer* €265 print
<http://erc.endocrinology-journals.org/>

Prices given are for 2017 subscriptions.

SAVE & PRINT

Payment Method

Please note that credit card payments are accepted through the ESE website by completing the online application and payment form at www.ese-hormones.org/membership/

- I enclose a cheque in Euros payable to European Society of Endocrinology
- I will be paying by bank transfer
Bank details are as follows:
HSBC, Bristol Filton Branch, 27 Gloucester Road North, Bristol, BS7 0SQ. UK.
Account name: European Society of Endocrinology (ESE). Bank Account number: GB79 HBUK 4012 7660 3661 60
Branch Identifier Code/SWIFT: BIC HBUKGB4B Account Number: 60366160.
Sort Code: 40-12-76
Please ensure that you include in the bank transfer reference 'ESE', and include details of the payer and the members first name and surname, and email the ESE Office to confirm that this has been done on info@euro-endo.org. **Please note all bank charges must be paid by the applicant.**
- Please send me a receipt

SIGNATURE:

DATE:

Applications for Ordinary membership must be accompanied by payment of the first year's membership fee. The application should be returned to the ESE Secretary, European Society of Endocrinology, Euro House, 22 Apex Court, Woodlands, Bradley Stoke, Bristol, BS32 4JT, UK or emailed to info@euro-endo.org, entitled 'Application for ESE Ordinary Membership' or faxed to +44 1454 642222.