

ECE 2019 was very successful, with a record number of attendees joining us in Lyon.

Over **4000** attendees



\*Including pre-Congress activities

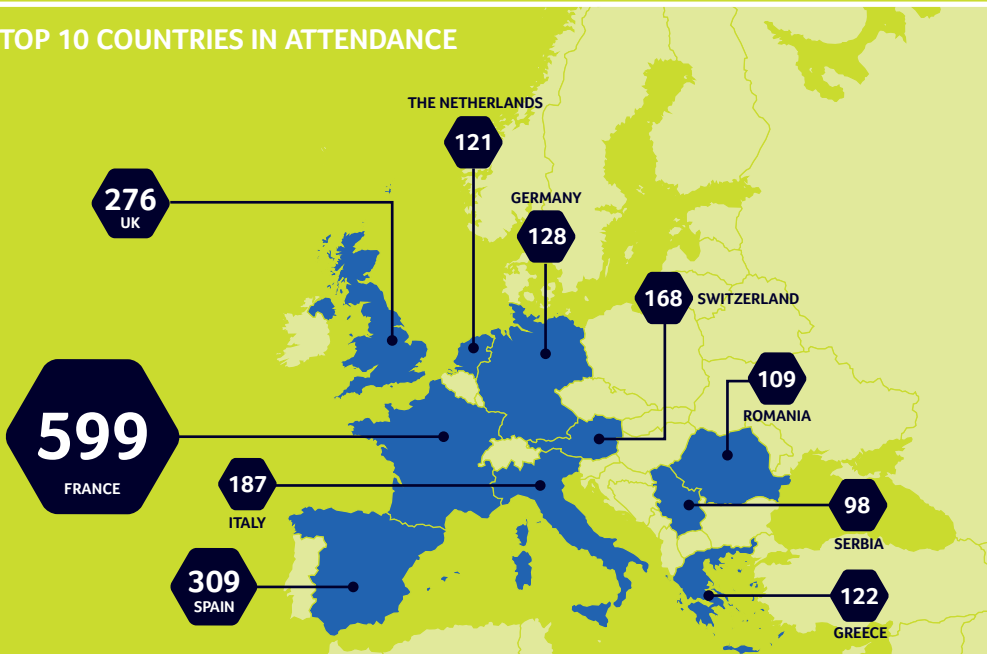
### ATTENDEES BY FOCUS AREA

1069	Adrenal and Neuroendocrine Tumours
834	Calcium and Bone
1272	Diabetes, Obesity and Metabolism
310	Environment Society and Governance
741	Interdisciplinary Endocrinology
1072	Pituitary and Neuroendocrinology
812	Reproductive Endocrinology
1151	Thyroid

### ATTENDEE AREA OF INTEREST



### TOP 10 COUNTRIES IN ATTENDANCE



### ECE HUB



**74%**

of delegates who attended a session in the ECE Hub would rate it either good or very good

\* based on post-event survey response

## ABSTRACT FOCUS AREA



- 262** Adrenal and Neuroendocrine Tumours
- 156** Calcium and Bone
- 457** Diabetes, Obesity and Metabolism
- 15** Environment Society and Governance
- 125** Interdisciplinary Endocrinology
- 317** Pituitary and Neuroendocrinology
- 122** Reproductive Endocrinology
- 299** Thyroid

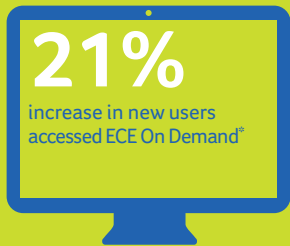
## ABSTRACT TYPE

Translational: **112**    **329** Basic

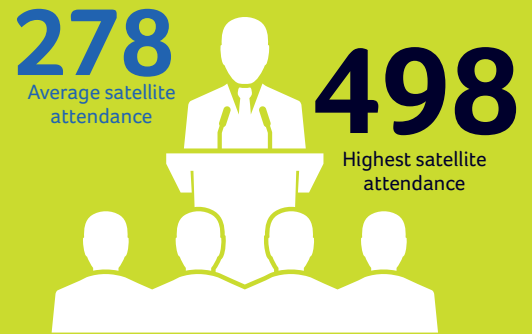


## ECE ON DEMAND

**84%** of attendees used ECE On Demand during the Congress  
\*Based on post-event survey response



## SATELLITE SYMPOSIA



## MEDIA



**623**

print, online and broadcast publications have covered this year's Congress



**56**

countries worldwide



**19**

different languages

## SOCIAL MEDIA

**1157**  
Tweets

**1400K**  
Reach

**247**  
@ESEndocrinology Likes

## CORPORATE MEMBERS

We would like to thank all our Corporate Members for their generous and continuous support of ESE and our activities.

Premium Corporate Members:



Corporate Members:



Supporter:



## BE PART OF NEXT YEAR'S EVENT

**ECE 2020**  
22nd European Congress of Endocrinology

23 - 26 May 2020  
Prague, Czech Republic  
[www.ece2020.org](http://www.ece2020.org)



For sponsorship information please contact Victoria Withy, Sales and Marketing Manager [victoria.withy@ese-hormones.org](mailto:victoria.withy@ese-hormones.org) +44 (0) 7761 800855