

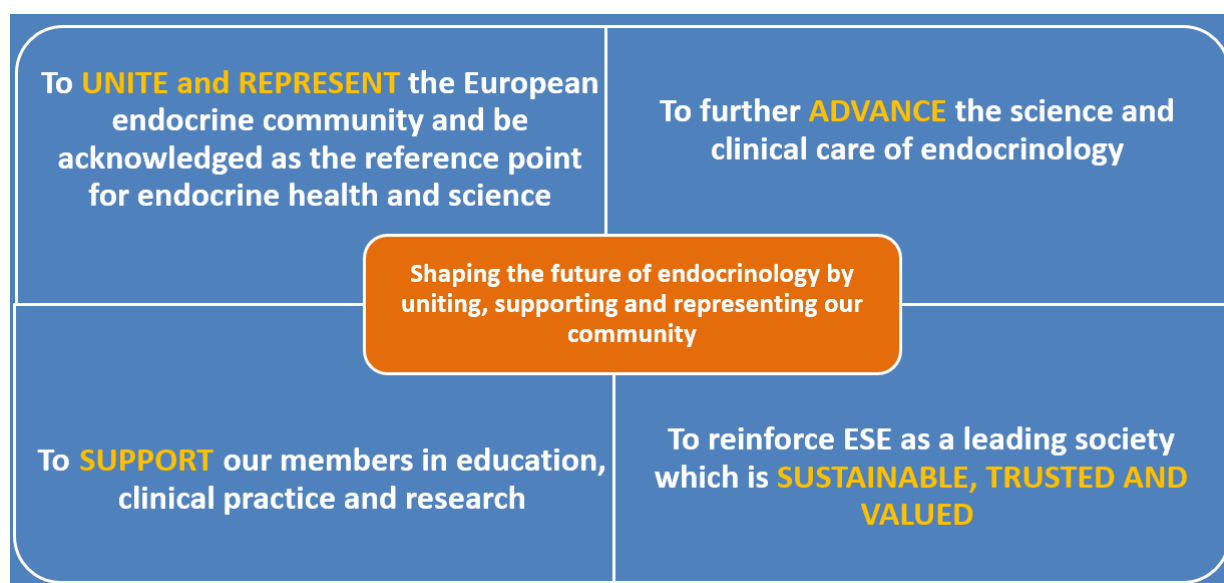
## ESE Corporate Membership Brochure 2026

### ESE: The voice for endocrinology

Endocrine conditions affect millions of people worldwide, spanning all ages, genders and nationalities. Our vision is to **shape the future of endocrinology to improve science, knowledge and health**. We represent a community of over **5000** individual members, along with more than **20 000** endocrine health care providers through our [Council of Affiliated Societies \(ECAS\)](#).

Collaboration is critical in delivering our vision, and the ongoing efforts of our industry partners in research and development, as well as in making products available around the world, support this vision. A strategic relationship with ESE through Corporate Membership provides your company with opportunities to **network with ESE leadership**, **connect with our membership** through participation at events, **share disease awareness materials** through our various platforms, and to **position yourself as a thought leader** in the endocrine space.

### Our Strategy



We achieve this through:

- providing [education](#) for all career stages, and across all areas of endocrinology;
- developing [clinical guidelines](#) improving the standards of clinical care;
- organising the annual [European Congress of Endocrinology \(ECE\)](#),
- supporting the [patient community](#), and
- advocating for and impact on [European health policies](#), with focus on hormone health and disease.

[\*\*Read more about our 2026 Focus below\*\*](#)

## ESE Corporate Membership 2026: Benefits

Premium Corporate Membership (€30,000)	Corporate Membership (€18,000)	Supporter Membership (€6,000)
<b>Expert insights</b>		
Option for one (1) meeting with identified ESE leadership/Experts (subject to availability)	Option for one (1) meeting with identified ESE leadership/Experts (subject to availability)	Option for one (1) meeting with identified ESE leadership/Experts (subject to availability)
<b>Congress</b>		
Acknowledgement on site at ECE 2026	Acknowledgement on site at ECE 2026	Acknowledgement on site at ECE 2026
Opportunity to attend <b>ECE 2027</b> industry site visit (October 2026)	Opportunity to attend <b>ECE 2027</b> industry site visit (October 2026)	Opportunity to attend <b>ECE 2027</b> industry site visit (October 2026)
2 x ECE 2026 full congress registrations	1 x ECE 2026 full congress registration	Third priority allocation on accommodation, sponsorship, education and exhibition opportunities at <b>ECE 2027*</b> along with Congress sponsors
First priority allocation on accommodation, sponsorship, education and exhibition opportunities at <b>ECE 2027*</b>	Second priority allocation on accommodation, sponsorship, education and exhibition opportunities at <b>ECE 2027*</b>	
<b>Membership</b>		
3 x individual ESE memberships**	2 x individual ESE memberships**	1 x Individual ESE membership**
Membership of ESE Industry Partnership Board (see below)		
<b>Education</b>		
Option to include company medical education/disease awareness resources on ESE website	Option to include company medical education/disease awareness resources on ESE website	Option to include company medical education/disease awareness resources on ESE website
NEW: Option to propose topics for <a href="#">'Innovation in Endocrinology'</a> webinars (subject to additional sponsorship)	NEW: Option to propose topics for <a href="#">'Innovation in Endocrinology'</a> webinars (subject to additional sponsorship)	NEW: Option to propose topics for <a href="#">'Innovation in Endocrinology'</a> webinars (subject to additional sponsorship)
<b>Visibility</b>		
Option to include industry news on ESE monthly alert emails (subject to ESE approval)	Option to include industry news on ESE monthly alert emails (subject to ESE approval)	Option to include industry news on ESE monthly alert emails (subject to ESE approval)
Listing on all ESE quarterly newsletter issues	Listing on all ESE quarterly newsletter issues	Listing on all ESE quarterly newsletter issues
Listing and link to company page on ESE website	Listing and link to company page on ESE website	Listing and link to company page on ESE website

\*ECE 2027 booking opportunities open in September 2026. Corporate Member companies in 2026 will be given priority allocation for 2027 opportunities, based on agreement to remain as Corporate Member in 2027. Priority allocation on accommodation is for a limited time only (to be confirmed ahead of bookings opening. Sponsorship, education and exhibition priority allocation runs until 1 November 2026.

\*\*nominated company representatives must meet the individual membership criteria as outlined on the [ESE membership pages](#). Individual memberships are subject to approval by the ESE Executive Committee.

## ESE Corporate Membership 2026: Fees

ESE Corporate Membership is valid for one calendar year, from January to December. We welcome multi-year agreements to aid in our planning.

Membership Level	Cost* (per year)	World Hormone Day Supplement**
Premium Corporate Membership	€30 000	€5,000
Corporate Membership	€18 000	€5,000
Supporter Membership	€6000	€5,000

\*Prices are subject to VAT as applicable.

\*\*Optional – see below

**24 April is World Hormone Day!** This global initiative is designed to spread the message of the importance of good hormonal health.

We are grateful to our Corporate Members **BridgeBio, Camurus, and Recordati Rare Diseases** for their support of [World Hormone Day 2025](#), which enabled us to reach over 120 organisations across 40 countries, in 25 languages.

We ask our Corporate Members and Supporters to support us with a donation of **€5,000 per year** which is acknowledged on related materials to demonstrate a commitment to spreading our message

**Because Hormones Matter.** Donating companies are also given the opportunity for a member/members of ESE's leadership to attend internal company meetings, to talk about the importance of endocrinology and how this relates to company activities.

A simple tick-box is included on the Corporate Membership application form to enable companies to opt in to provide support to this important initiative.

## ESE Innovation webinars

We recognise the importance of our Corporate Member and Supporter companies' expertise in endocrinology, with companies being key sources of updates on the latest in endocrine science and treatment. To maximise the accessibility of this information, ESE offers the opportunity for Corporate Member and Supporter companies to propose topics for a specific series of webinars focussed on **Innovation in Endocrinology**.

More information about this opportunity can be requested from [Natalie Dass](#).

## The ESE Industry Partnership Board (IPB)

[The IPB](#) gives a formal structure to the collaborative work between the Society and our Corporate Members at a strategic level, looking at ways in which society and industry can partner more closely to further advance the focus on and growth of the endocrine discipline in Europe.

Membership of the IPB is included as part of the Premium Corporate Membership benefits, with companies at this level demonstrating a long-term commitment to supporting the Society and endocrinology as a whole. The Board is jointly chaired by a nominated industry representative and the ESE Chief Executive Officer, with the ESE President and Chair of the ESE Education Committee also being board members.

More information about the Industry Partnership Board can be requested from [Natalie Dass](#).

## 2026: Our focus

**2026 marks the 20<sup>th</sup> Anniversary of ESE!** Since its beginnings in 2006, ESE has grown to become the home of European endocrinology. We will celebrate this exciting milestone at the 28<sup>th</sup> European Congress of Endocrinology in Prague and with other activities throughout the year.

2026 will see us continuing to deliver events and initiatives under our strategic pillars. The support provided through our Corporate Membership scheme is crucial in enabling us to drive these projects and achieve our vision.

### Unite and Represent

ESE has a strong collaboration with 50 National Endocrine Societies throughout Europe, 16 European Specialist Societies and 32 Patient Advocacy Groups, and this network continues to grow. With these partners we work towards shaping a better future and success for endocrinology, ultimately benefitting patients with endocrine disorders.

The **Drug Availability and Shortages** survey performed in 2025 has mapped endocrine drug availability across Europe, including dynamics around drug shortages. In partnership with our Patient Advocacy Group Community, paediatric endocrinology as well as representatives of the European Rare Disease Network for endocrinology (Endo-ERN) this survey will inform further advocacy efforts to improve the access of patients with endocrine diseases to required medication.

In 2025, we launched the **State of Endocrinology** survey, designed to assess how we see the present and future outlook of our discipline. Based on a broad interrogation of our membership and national societies we will formulate recommendations on how to secure a healthy endocrine discipline in a future that may see a growing prevalence of endocrine disease and more complex conditions and treatments, against the backdrop of workforce shortages, as predicted by the WHO (expected in the second part of 2026).

The [EndoCompass Project](#), carried out in collaboration with the European Society for Paediatric Endocrinology (ESPE) and other partner societies, brought together over 200 endocrine experts from across Europe to identify the research priorities in endocrine science. The findings of the project will be published in the *European Journal of Endocrinology* and *Hormone Research in Paediatrics* in the second part of 2025, and will be used as a tool to inform discussions around funding for endocrine research throughout 2026 and beyond.

### Support

Patients are at the centre of all we do, and the popular [ESE Patient Forums](#) in the areas of hypoparathyroidism and adrenal will again take place in 2026. ESE's [Patient Advocacy Group \(PAG\) Affiliate Membership Scheme](#) continues to expand, ensuring that the Patient's Voice is represented throughout our activities. PAGs will also, once again, be provided with space at the Congress to enhance the links between the patient community and clinicians.

Our members sit at the heart of our Society. Our bespoke, in-house **membership system** provides us with data that helps us ensure our activities offer real benefit to our communities. Throughout 2026 we will continue to scrutinise this data, providing information and insights to our organisational partners, including our Corporate Members, to help them plan and tailor their activities accordingly.

The [European Congress of Endocrinology \(ECE\)](#) is a highlight of the endocrine calendar and ECE 2026 will take place from 9-12 May in Prague, Czech Republic, following on from the great success of the Joint Congress of ESPE and ESE which took place in Copenhagen, Denmark in 2025. Corporate Member

companies are given priority access to opportunities at the Congress and, since bookings open in September of the previous year, Corporate Membership in 2026 will provide priority access\* to opportunities at ECE 2027 (8-11 May 2027, Basel Switzerland).

*\*Bookings assume a continuation of Corporate Membership into the Congress year.*

## **Advance**

ESE's focus on education will continue throughout 2026 and beyond. The **ESE Learning Management System (LMS)** was launched in 2025 and now contains a library of over 250 recordings. Throughout 2026, the LMS will be expanded to encompass more events and activities, including housing the recordings from the Innovation Webinars (see above), and will be developed to include e-learning courses and enduring resources to support our members.

Corporate Membership includes a number of individual Society memberships, enabling company representatives to access the LMS and other key membership resources.

Engagement with ESE's Corporate Membership scheme is also a prerequisite for companies wishing to support our **independent medical education programmes**, and we are grateful to those companies which have supported these programmes in recent years.

During 2026, the educational outputs from the [Rare Calcium, Phosphate and Bone Disorders programme](#) (Rare-CaPaB), kindly supported by Alexion, Ascendis Pharma, BridgeBio, Inozyme Pharma, and Kyowa Kirin, will be finalised and released. This 24-month programme was designed to address the unmet medical education needs in this area, with a specific focus on five identified conditions.

Additionally, a new independent medical education programme on the **treatment and management of Obesity** is anticipated to commence early in 2026. Further educational programmes are in discussion, and opportunities for engagement can be discussed with [Natalie Dass](#).

Our established calendar of online events will continue throughout 2026, including Clinical Updates, online Post Graduate courses and ESE Talks webinars for our clinical audiences, and Spotlight on Science webinars aimed at basic scientists and researchers. Our popular in-person events include the prestigious annual EuroPit meeting, plus events designed to bring together the early career community such as an in-person Post-Graduate Course in Lithuania, ESE Summer School and the ESE Young Endocrinologists and Scientists (EYES) Annual Meeting, provide a focus on the future. These in-person events offer a prime opportunity to network with the future Key Opinion Leaders in both clinical and basic endocrine practise.

In addition, we will continue to expand our extensive catalogue of [Clinical Guidelines](#) to support clinicians in delivering the best possible endocrine care, based on the latest science and treatments. Each Clinical Guideline is accompanied by a **Patient Information Leaflet** so that the information can be easily disseminated to the patient community. These leaflets are developed in collaboration with clinical and patient experts and can be translated into multiple languages. Our **Patient Advocacy Group Affiliate Membership Scheme** provides established channels to share this information directly with patients.

## **Sustainable, Trusted and Valued**

All ESE partner organisations, including Corporate Members, are asked to agree to our **Humanitarian Statement** to confirm a commitment to three key principles: dedication to peace, respect for international law, and the non-political nature of our shared mission.

Our activities adhere to our [Environmental policy](#), which is shared with all suppliers and venues to ensure that the people and organisations we work with can support us to deliver our green commitment.

To ensure we continue to meet the needs of our members and the endocrine community, ESE has a well-established team responsible for supporting and delivering all our activities. The [ESE Team](#) drives our Society forward and ensures that ESE continues to be the Voice for Endocrinology in Europe.

We invite our Corporate Member companies to suggest additional areas and opportunities for programmes, events and initiatives, which will be considered by our committees.

**For more information and to apply for Corporate Membership contact [Natalie Dass](#).**

## Thank you to our 2025 Corporate Partners:

### Premium Corporate Members



### Corporate Members



### Supporters

